

Tillers

RG



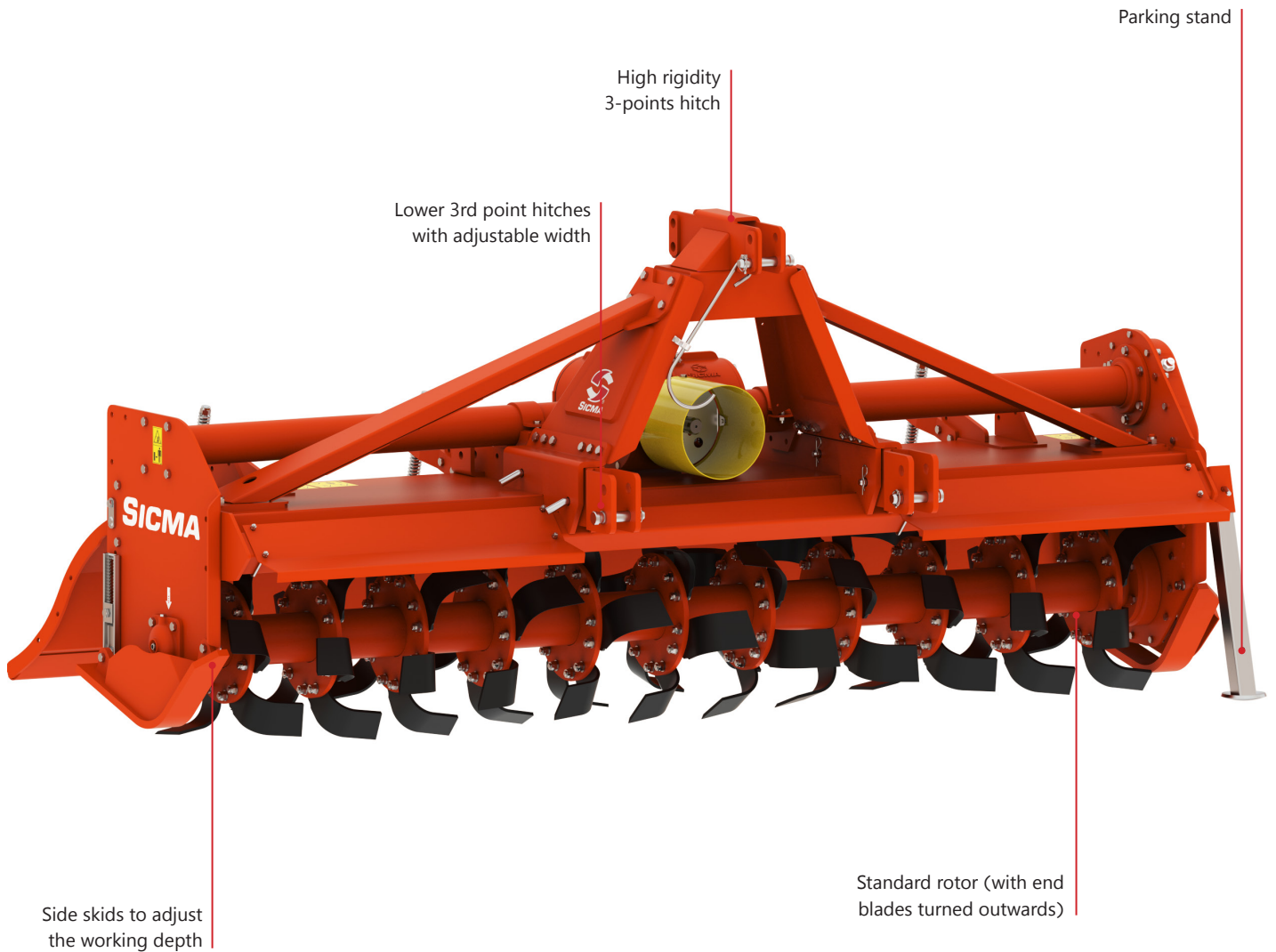
 **SICMA**®

RG

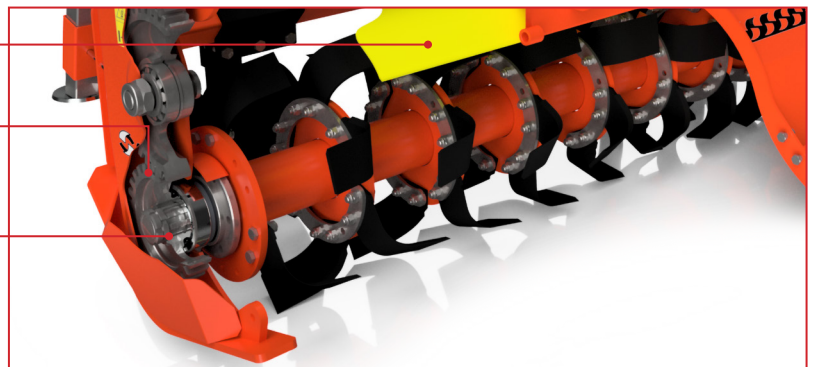


The RG model is a very heavy fixed open field rotary tiller (90-160 HP) of the professional series with carefully designed construction details. It can be equipped with hoe, tine or blade rotors with large

working widths (up to 305 cm) and various optional features available such as different rollers, ground protection kit and hydraulic attachment for seed drill.



- Double boxed sheet metal frame
- SICMA production gears made of heat-treated alloy steel
- "Long life" seal in the rotor bearings





Universal shaft
Eurocardan
Dimension 8



4-speed (@540 rpm) and 2-speed (@1000 rpm) gearbox manufactured by SICMA, with tapered roller bearings and oil dip stick

Tension springs to firmly press the hood on the ground for better soil leveling

Reinforced cross tube of the frame

Side gear drive in oil bath and sight glass

High thickness side plates



TECHNICAL DATA

Reducer speed:

<p>540 rpm</p>	<p>21 - 17</p>	<p>106 rpm</p>
	<p>22 - 16</p>	<p>230 rpm</p>
<p>1000 rpm</p>	<p>16 - 22</p>	<p>225 rpm</p>
	<p>17 - 21</p>	<p>250 rpm</p>

Models and Features:

	HP	mm (in)	mm (in)	kg (lbs)	nr. 6	nr.	nr. 03	nr. 01	cat.
RG 230	90 ▶ 160	2300 (90")	2520 (99")	880 (1940)	54	43	56	48+8	2°
RG 255	90 ▶ 160	2550 (100")	2770 (109")	970 (2138)	60	48	60	52+8	2°
RG 280	90 ▶ 160	2800 (110")	3020 (119")	1000 (2205)	66	53	68	56+8	2°
RG 305	90 ▶ 160	3050 (120")	3270 (129")	1032 (2275)	72	56	76	64+8	2°

ROTOR VERSIONS

The rotors, differentiated according to the type of work, are built with thick tubes and may have counter-flanges on the blades, for additional reinforcement required in difficult working conditions. Upon request, the rotor can be equipped with end

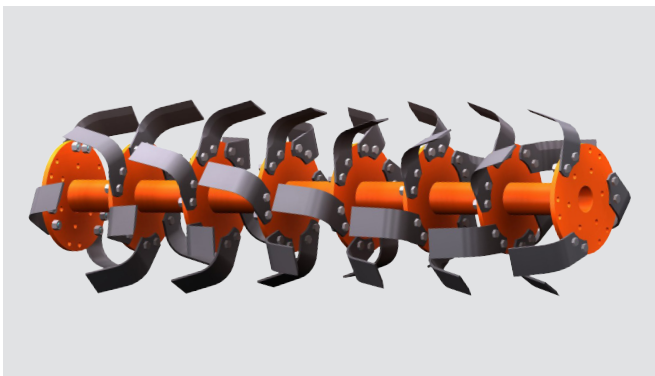
blades oriented inward to prevent damage to the superficial roots of nearby crops. Additionally, a pair of track-breaking anchors, mounted in front of the tiller, loosens the compacted and hardened soil caused by the tractor's passage.



STANDARD ROTOR



It is fitted as standard and is suitable for well-drained, easy-to-work soils.



PUGLIA ROTOR

This rotor has hoe blades at the ends facing inward, which avoid cutting roots. Used for tree and vineyard crops.



BLADE ROTOR WITH SINGLE BOLT FIXING



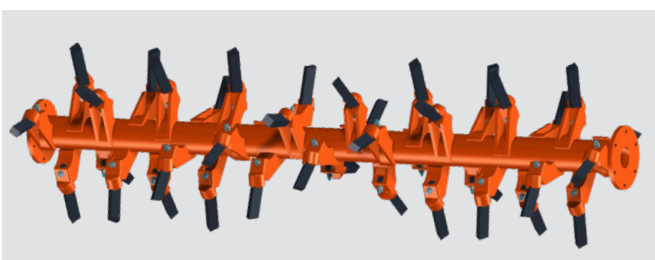
For hard and wet soils that require more incisive tilling.



BLADE ROTOR WITH SINGLE BOLT FIXING



For hard and wet soils that require more incisive tilling.



TOOTH ROTOR



For very hard and stony soils that require more intense tilling.



TYPES OF HOE BLADES

The hoe blades are forged from high-strength boron steel, making them highly efficient and durable. There are different types to use depending on the soil:



CURVED HOE

Recommended for medium-textured and moist soils.



SQUARE HOE

Recommended for sandy soils.



HTITE® HOE

Ideal for use in siliceous and abrasive soils, thanks to the tungsten carbide overlay.



BLADE

Straight shape, designed for maximum performance on tough and wet soils.



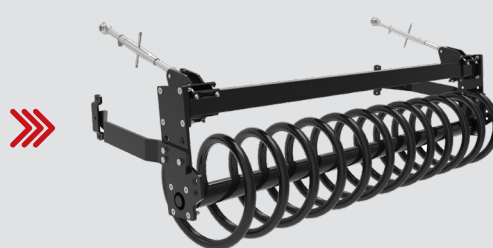
TOOTH

Straight shape, but with squared section, particularly suitable for working on hard and stony soils.

ROLLER TYPES

SPIRAL ROLLER

The spiral roller has a greater contact surface with the soil. It consolidates and stabilizes the ground more effectively than the cage system, working well on very soft soils and those with stones and pebbles. **It is suitable for medium-textured or sandy soils.**



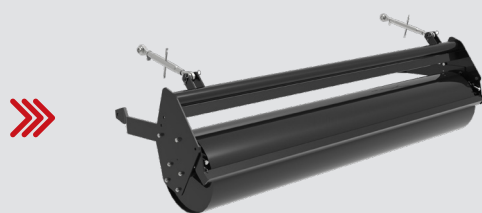
PACKER ROLLER

A series of adjustable scrapers keeps the roller's surface clean from adhered soil portions. **Useful for re-compacting the surface to prevent moisture evaporation during hotter seasons with high drought.**



SMOOTH ROLLER

This is a smooth-surfaced metal cylinder made of a large-diameter tubular structure. **Useful for preparing soils for vegetable sowing.**



SPIKE ROLLER

Spikes that are "bent" in the middle are welded to its surface, arranged in a spiral around the axis. Specific scrapers keep the roller clean from soil that may stick to the central tube. **Useful for stony, clayey soils and those with a high degree of moisture.**



CAGE ROLLER

The rods improve contact with the ground and facilitate rotation, reducing the lifting effect when passing over obstacles such as stones or hard clods. **Useful for working dry soils, with medium humidity and small stones.**



ACCESSORIES



Bed shaper

The bed shaper can be used on all types of soil to create an optimal seedbed or transplant bed, especially for vegetables.



Pair of conveying discs

They are mounted in front of the rotary tiller, close to the side skids; the discs open a furrow in the ground thus facilitating greater working depth



Pair of side metal wheels

For working depth adjustment



Spring loaded cover kit

It firmly presses the hood on the ground to achieve greater soil levelling



Hydraulic cylinders for roller adjustment

to adjust the roller work depth directly from the tractor



Rear leveling blade

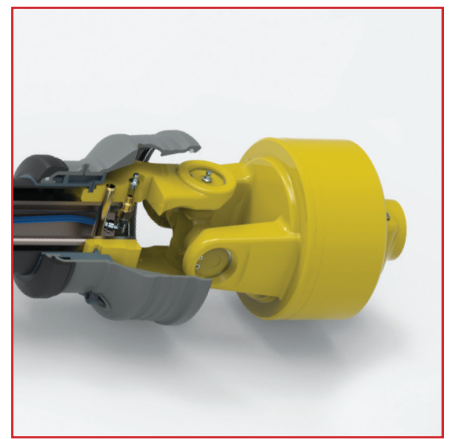
RG 230 - 255 >> RG 280 - 305



PTO shaft pre-set @1000 rpm



Hydraulic hitch for seed drill



Eurocardan automatic LDR clutch



Front metal wheels instead of skids



Pair of fixed track eradicators



Pair of track eradicators with shear bolt



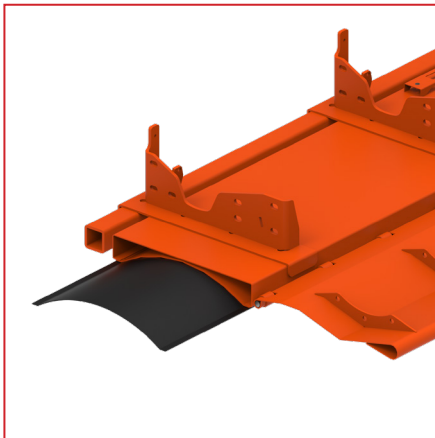
Pair of spring-loaded track eradicators



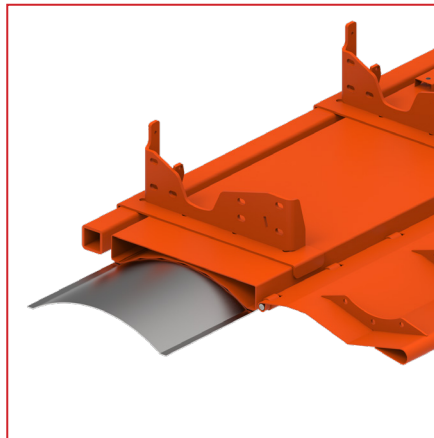
Quick hitch with bar



Counter flanges
RG 230 - 255 >> RG 280 - 305



Technopolymer protections



Stainless steel protections

*The experience that cultivates
the future of your land*

SICMA S.p.a. is an Italian company and a leader in
the professional agricultural machinery sector.
We design and create cutting-edge solutions for
you, the farmer of tomorrow. Innovation and
passion at your service.



MIGLIANICO | ABRUZZO | ITALY

Sicma SpA

Contrada Cerreto, 39
66010 Miglianico (CH)
Tel. +39 0871 95841

info@sicma.it - www.sicma.it

